

Everything is connected





**Living in Marbella means  
enjoying a privileged  
environment, with a sunny  
climate, spectacular beaches,  
and a rich cultural, sporting,  
and gastronomic offering**

Marbella is synonymous with quality of life. Its mild climate, the serenity of the Mediterranean, a privileged natural environment, and its cosmopolitan atmosphere make it the ideal place to live.



# Marbella







PUERTO BANÚS BEACH



## 01 / LOCATION

Located in the heart of the Costa del Sol, Marbella enjoys a strategic position next to the Mediterranean and just a few minutes from Malaga International Airport.



Between the sea and the Sierra Blanca mountains, it offers a unique natural environment and excellent national and international connectivity.





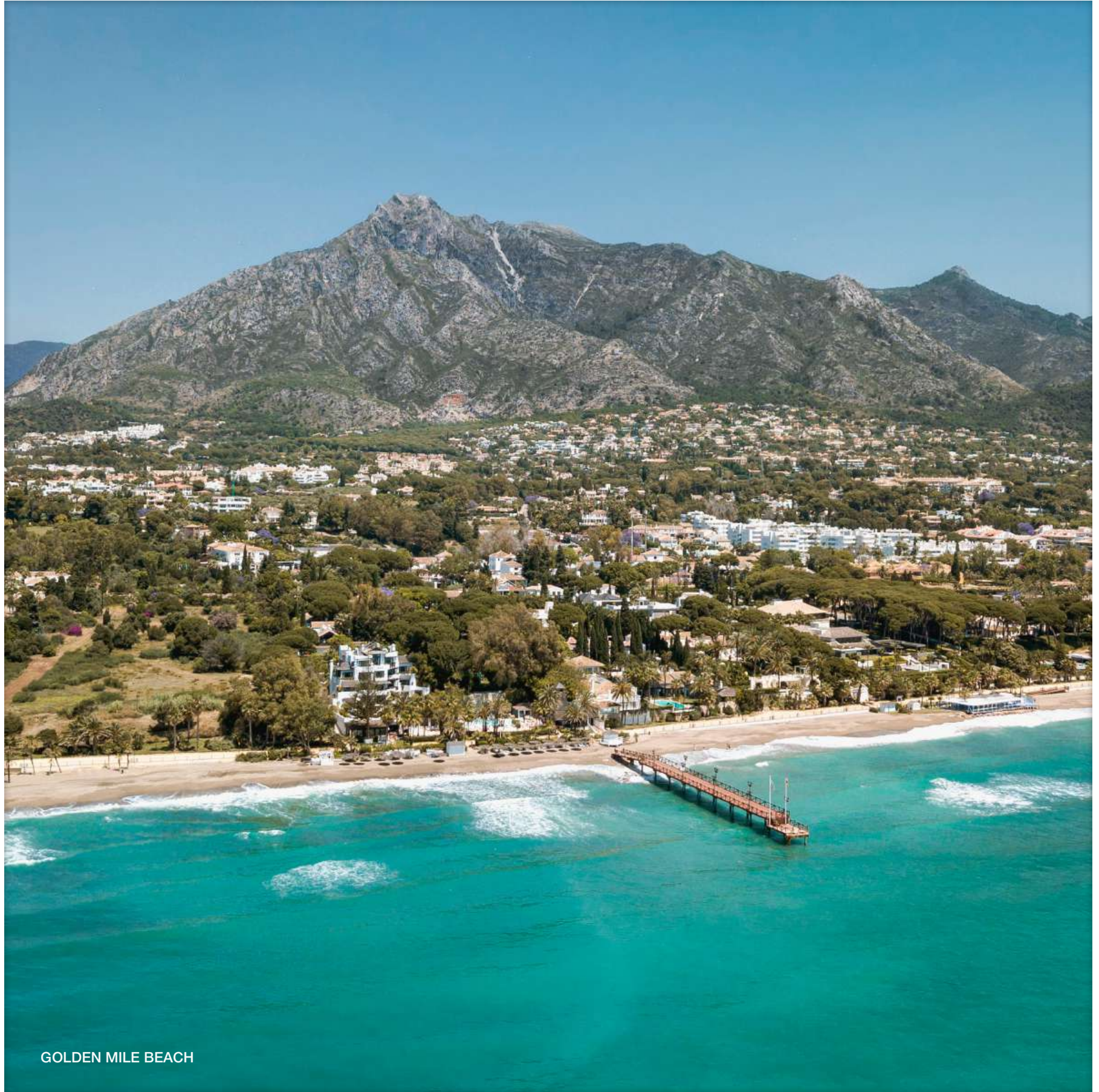
TORRE DE LOS LADRONES, ARTOLA DUNES

With more than 300 days of sunshine a year and mild temperatures even in winter, Marbella has everything necessary to enjoy an outdoor lifestyle all year round: golf courses, marinas, beach clubs, and natural spaces in a privileged setting.



ALOHA GOLF COURSE IN MARBELLA





GOLDEN MILE BEACH



## 01 / LOCATION

Marbella has a well-established network of services: international schools, private medical clinics, wellness centers, and first-class dining options.



## **ZEW is located in Elviria West, a rapidly growing area in eastern Marbella**

Located in Elviria West, ZEW offers an exclusive setting surrounded by nature and spectacular open views of the surrounding area.

Its privileged location allows you to enjoy the tranquility of a green environment, without sacrificing proximity to all services and shops and leisure options offered by Marbella and the Costa del Sol.

# Elviria West



REAL DE ZARAGOZA BEACH, MARBELLA







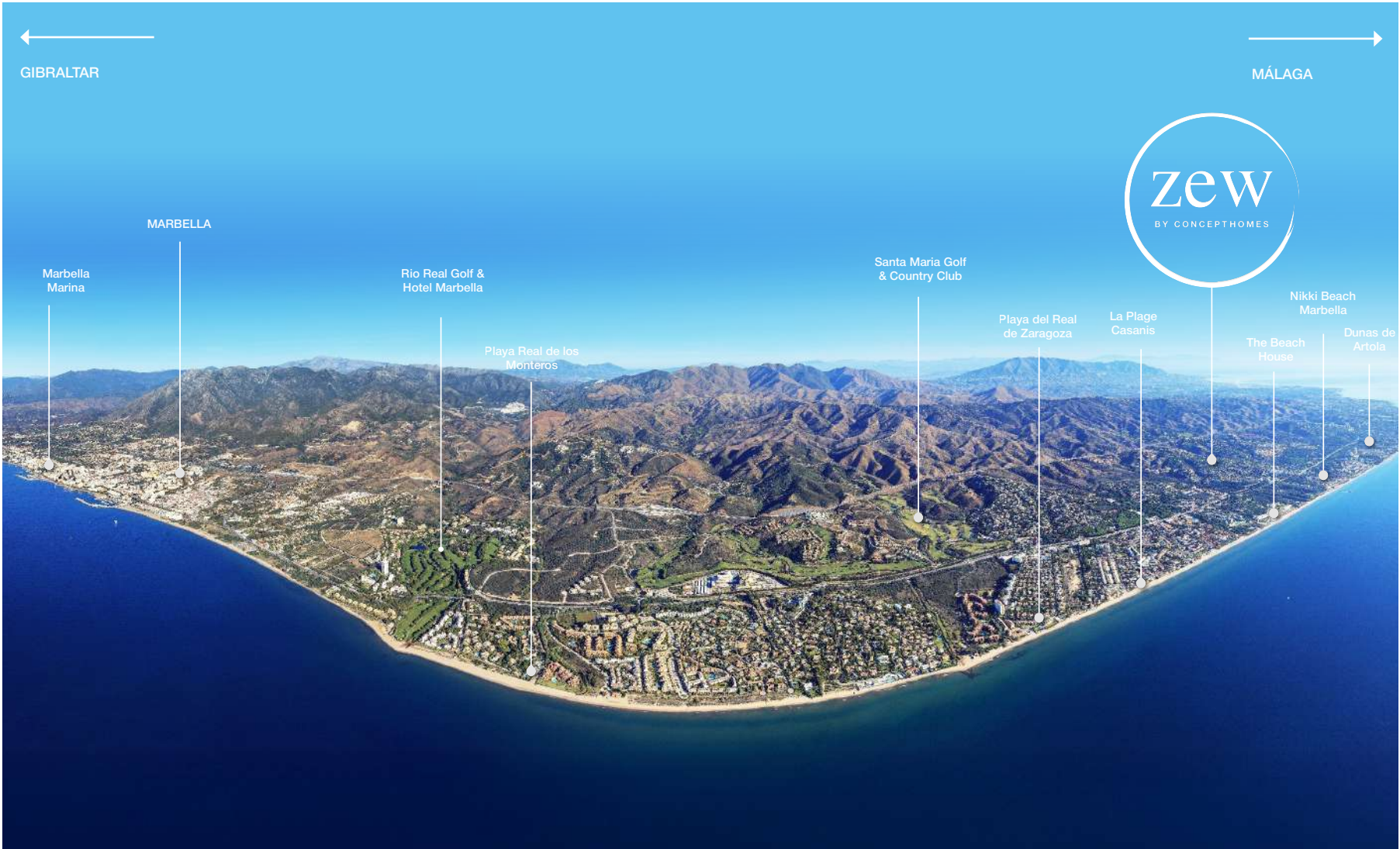
## 01 / LOCATION

For sports enthusiasts, ZEW is surrounded by prestigious golf courses such as Santa María Golf & Country Club, Greenlife Golf, Rio Real Golf, Santa Clara Golf, and Marbella Golf Country Club.



In terms of gastronomy and leisure, Elviria offers first-class restaurants such as El Lago (Michelin star), Brass Marbella, The Beach House, La Plage Casanis, San Martino, and Nikki Beach Marbella.

The area also boasts exclusive hotels such as Don Carlos Resort & Spa, Marriott's Marbella Beach Resort, and Casa Bodhi Boutique Hotel & Spa.



**5 minutes away**

Supermarkets, shops, and restaurants in Elviria. The best beaches in Marbella Este, next to exclusive beach clubs such as Nikki Beach Marbella, La Plage Casanis, The Beach House, and Dune Beach Club Marbella.

**15 minutes**

From Marbella city center and its vibrant cultural and leisure offerings.

**30 minutes**

Malaga International Airport.



02

# PROJECT

EVERYTHING IS CONNECTED

zew

BY CONCEPTHOMES









# An exclusive residential complex with spacious penthouses with solariums and 2-, 3-, and 4-bedroom garden villa



ZEW offers a lifestyle that combines comfort and functionality, with bright rooms that make the most of natural light, and spaces designed to enjoy tranquility and the surroundings.



02 / PROJECT

Comprising 88 homes where modern design is combined with functional spaces and areas designed for enjoyment and sharing.

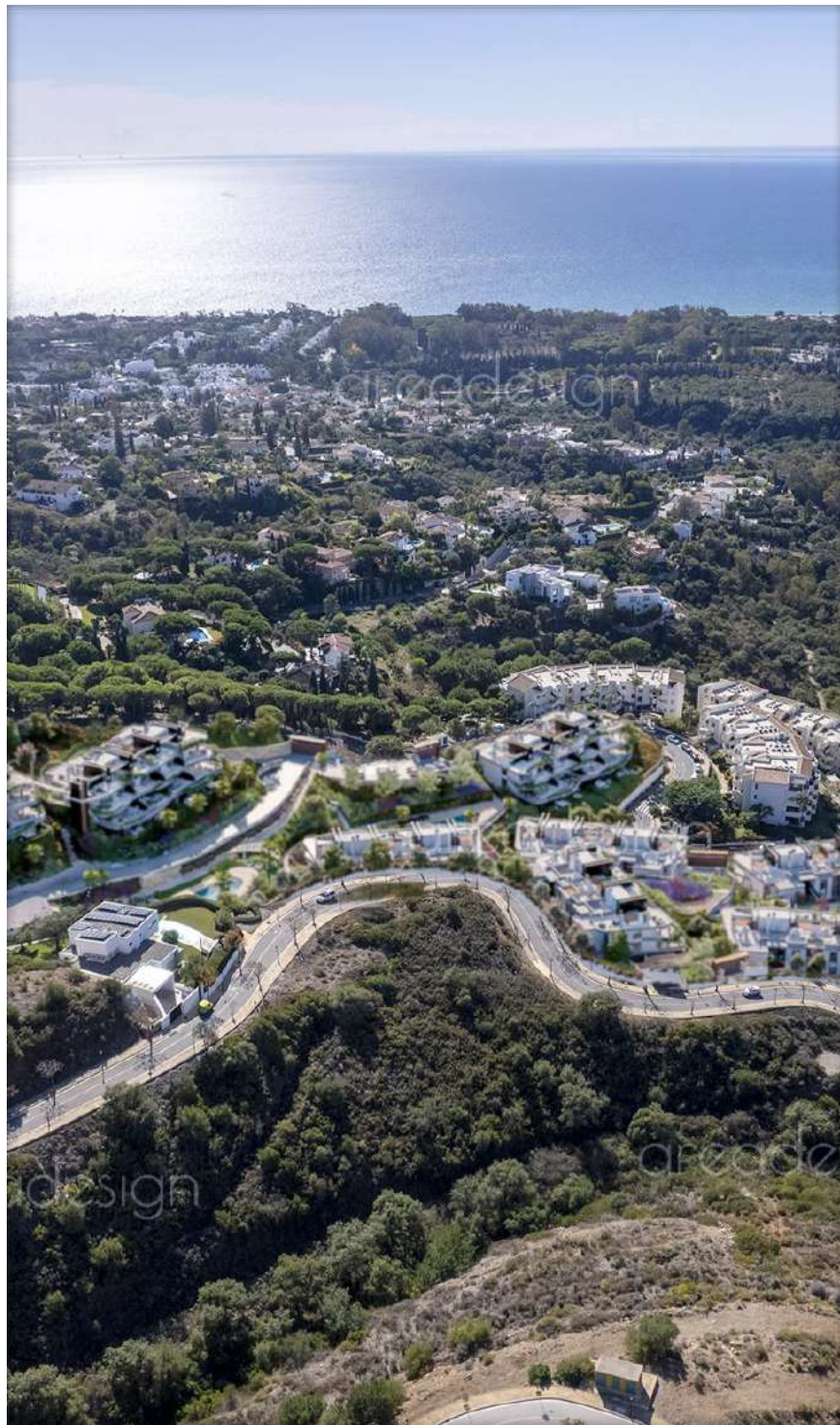


Each home includes two parking spaces and a private storage room, providing comfort and extra space.









## Surrounded by nature

At ZEW, the natural environment takes center stage. Located in an elevated area of Elviria West, the project enjoys open views of the mountains and the sea on the horizon. A peaceful place where you can enjoy the landscape every day thanks to an architecture that opens up to the outside.















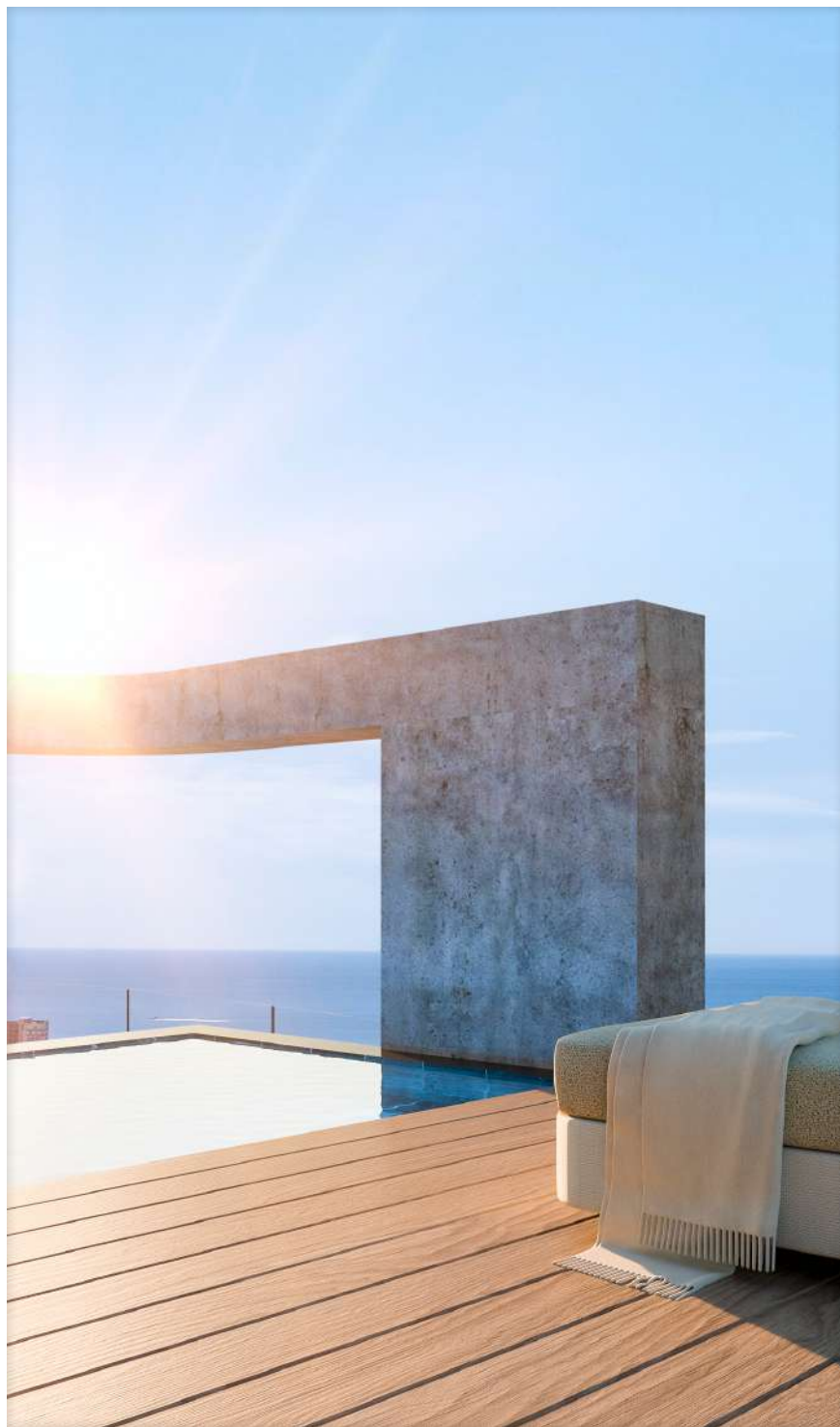
## Spacious rooms and full of light

The architecture of each home prioritizes natural light and a feeling of spaciousness. Large windows, open layouts, and careful orientation allow you to enjoy comfortable and bright spaces at any time of day.









## Inspiring views

At ZEW, the homes have been designed to look outwards. Each main room, from the living room to the bedrooms, is oriented so that the landscape is always present. The spacious terraces extend the space. The design seeks to make the outdoors part of the daily routine: having breakfast with a view, working in natural light, or ending the day gazing at the horizon.





03

# COMMON AREAS

SPACES TO SHARE AND ENJOY

zew

BY CONCEPTHOMES





## Common areas exclusively for residents



ZEW offers common areas designed to add value to the residential experience. Spaces designed for well-being and everyday life, such as gardens, swimming pools, relaxation areas, and areas for exercise or socialize.

01

### POOLS

There will be three outdoor swimming pools for adults, two for children, and one heated indoor

02

### COWORKING

There will be an indoor and outdoor coworking area, ideal for those who prefer a communal workspace.

03

### SPA, GYM & WELLNESS

The ZEW spa combines design and wellness in perfect harmony: heated indoor pool with natural light, jacuzzi, sauna, Turkish bath, and an exclusive lounge area with sun loungers.

04

### GARDENS

Landscaping designed with attention to detail, with paths, green areas, and quiet corners that invite you to enjoy the outdoors

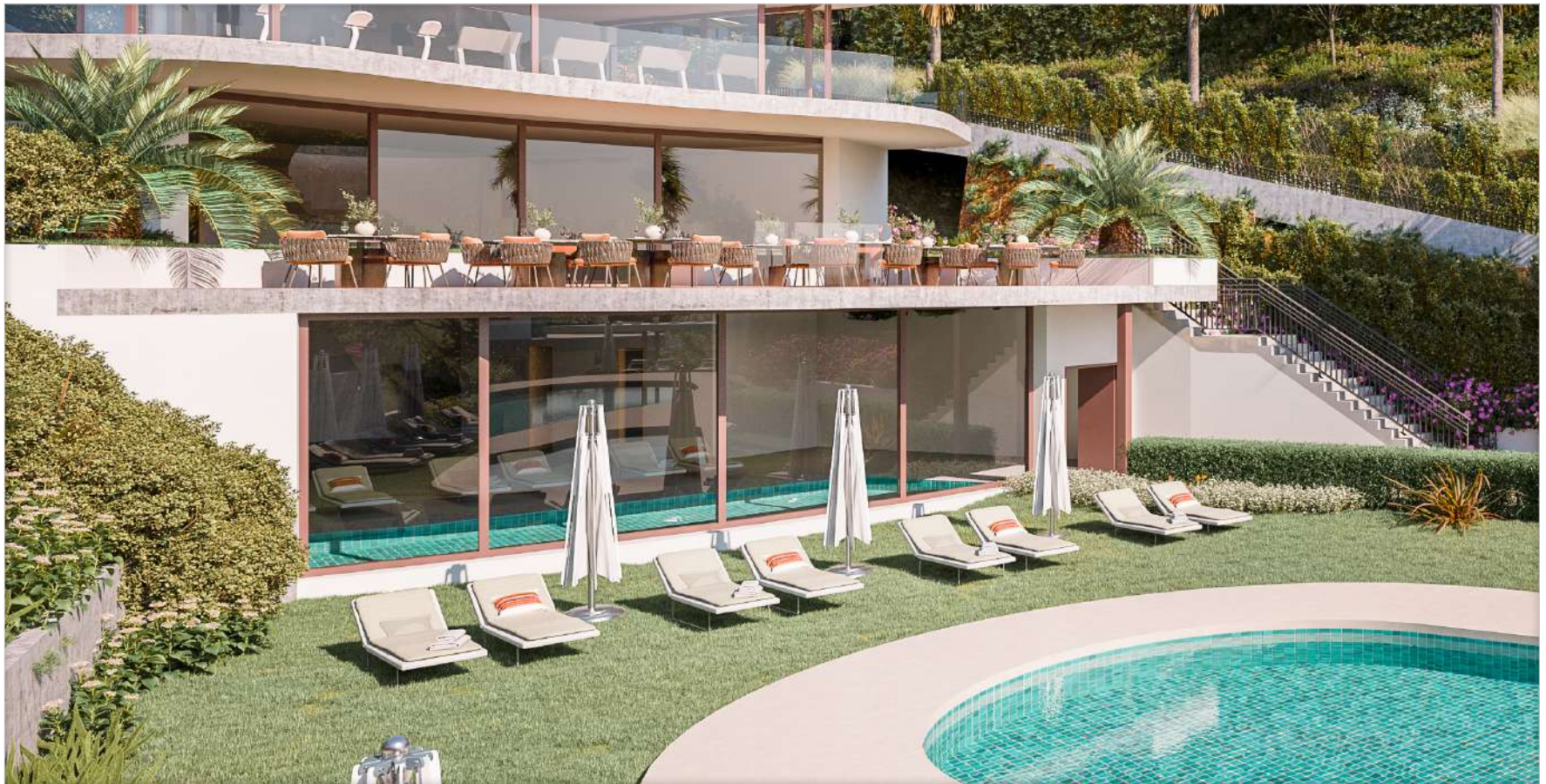
05

### 24-HOUR SECURITY

A secure and private environment with controlled access, designed to offer peace of mind and privacy to all residents.



## Community swimming pools



ZEW includes three outdoor swimming pools for adults, two for children, and one heated indoor pool, perfect for enjoying at any time of year. Some homes have the option of adding their own private pool.

## Spa, gym & wellness



At ZEW, wellness is experienced as a complete experience. Its elegant indoor spa offers an atmosphere of calm and exclusivity, bathed in natural light. A heated pool invites you to relax at any time of year, while the jacuzzi, sauna, and Turkish bath provide moments of true relaxation and balance. In addition, it has a modern gym



## Coworking



ZEW offers both indoor and outdoor coworking spaces equipped for working or holding meetings without leaving the residential complex. They have good connectivity, functional furniture, and an environment conducive to concentration.

04

# QUALITIES

HIGHEST QUALITY FINISHES AND MATERIALS

zew

BY CONCEPTHOMES





**ZEW stands out for its  
contemporary design,  
functionality, and high-  
quality materials selected**







The design of ZEW bears the mark of architect Ismael Mérida, reflected in every detail: open, bright spaces that are perfectly connected to the surrounding nature.





## Materials and finishes



Each home has been built with high-end materials and elegant finishes. A selection that brings sophistication and durability.

## Kitchens



Open-plan kitchens with a contemporary design, bright and functional, with high-quality finishes that create the perfect environment for cooking and sharing with family and friends.











## Connected to the outdoors



They feature spacious private terraces that extend the residential experience into the landscape, with open views and a continuous feeling of spaciousness. Large windows allow for generous entry generous amount of natural light.

## Comfort and sustainability



The homes have been designed under strict criteria of energy efficiency and sustainability. The thermal insulation, orientation, and construction systems used guarantee optimal comfort throughout the year, with a lower environmental impact and a higher quality of life.





## Designed by Ismael Mérida Arquitectos

The project was designed by renowned architect Ismael Mérida, one of the most prestigious names in architecture on the Costa del Sol. His unmistakable style is characterized by clean lines, the fusion of interior and exterior spaces, and the integration of architecture into the natural environment. Mérida has created an architectural concept for ZEW that exudes balance, functionality, and timeless beauty, reflecting the Zen philosophy in every detail.





05

# CONCEPT HOMES

INTERNATIONAL EXPERIENCE AND LOCAL VISION

zew

BY CONCEPTHOMES





## ConceptHomes, international experience

With more than 20 years of international experience, ConceptHomes is a developer specializing in exclusive residential projects. Since its inception, it has developed homes that combine contemporary architecture, sustainability, and comfort, always with a people-centered vision. ZEW in Elviria West reflects this philosophy: a project that combines design, environment, and well-being in a privileged enclave on the Costa del Sol