



## Villa 18

Tipology B1

Bedrooms  
5

Bathrooms  
5+2

Orientation  
S

PRICE ON REQUEST









# AVENUE

MARBELLA

## VILLA 18

PLOT	917,19 m <sup>2</sup>
------	-----------------------

### BUILT AREA

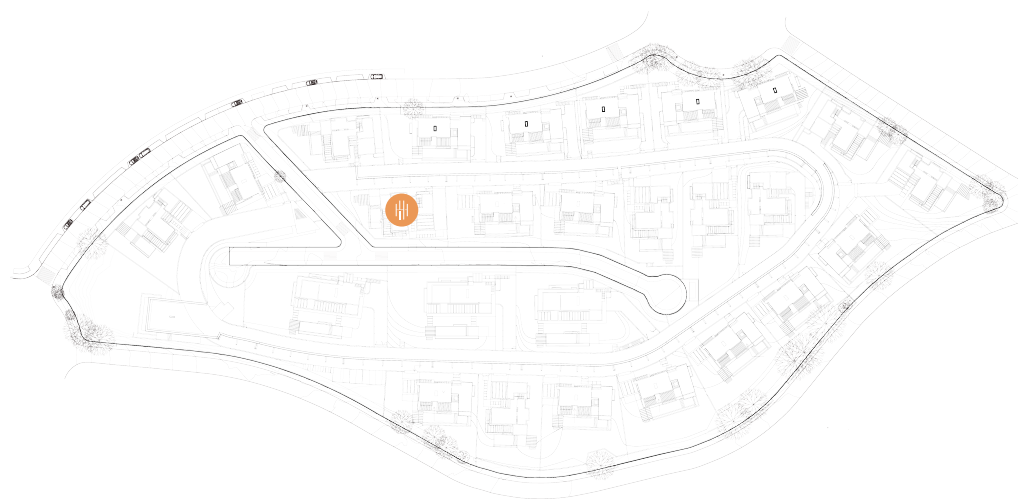
Living Area	488,25 m <sup>2</sup>
-------------	-----------------------

Terrace Area	355,15 m <sup>2</sup>
--------------	-----------------------

ACCORDING TO DECRETO 218/2005

Useful Area	434,56 m <sup>2</sup>
-------------	-----------------------

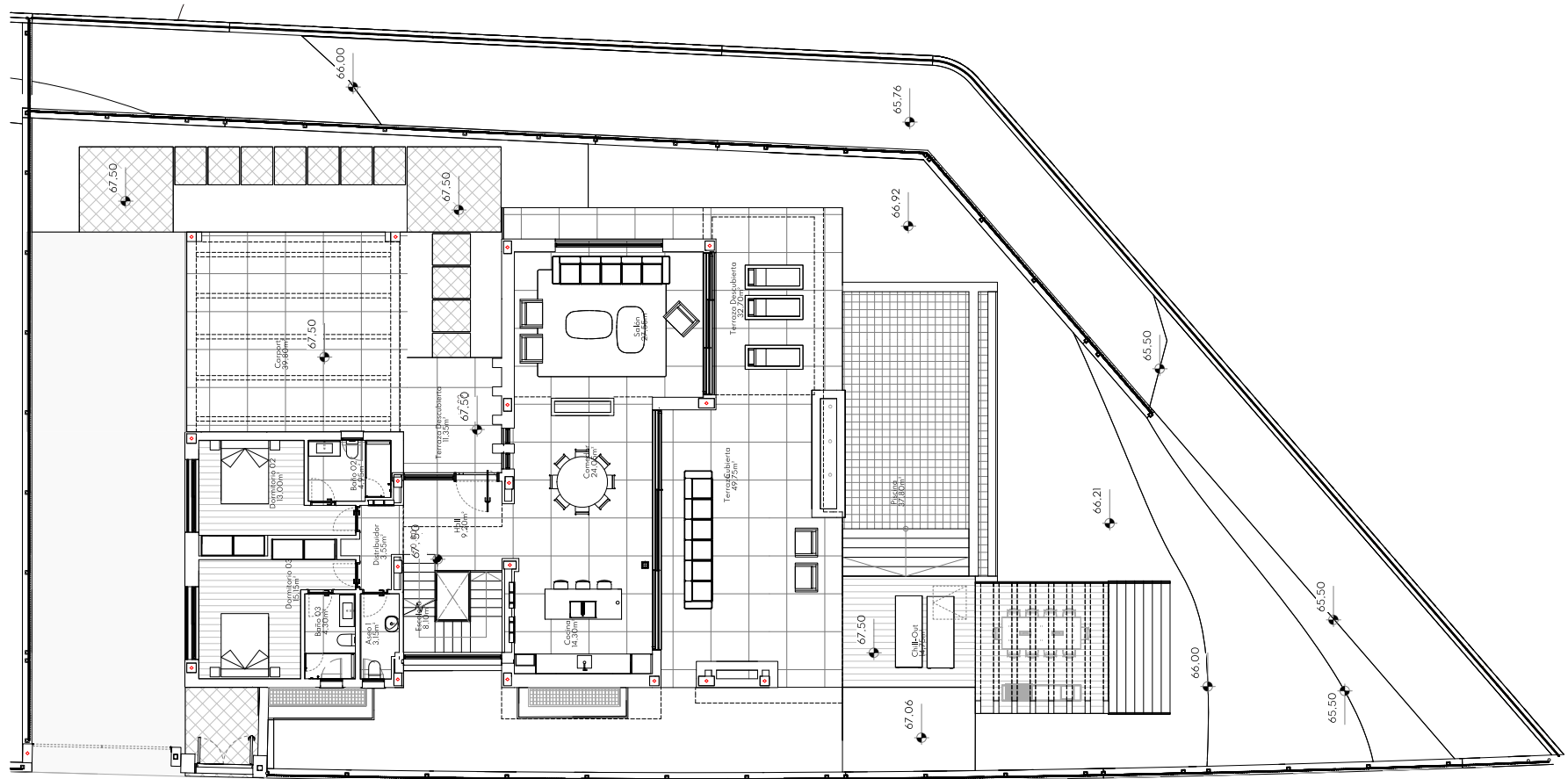
Built Area	546,28 m <sup>2</sup>
------------	-----------------------



This plan may be modified depending on progress of the development. The furniture shown is purely for decorative purposes. The project manager reserves the right to make the necessary changes for any possible functional, aesthetic and legal reasons, without this negatively affecting the quality of the construction. Illustrative dimensions.



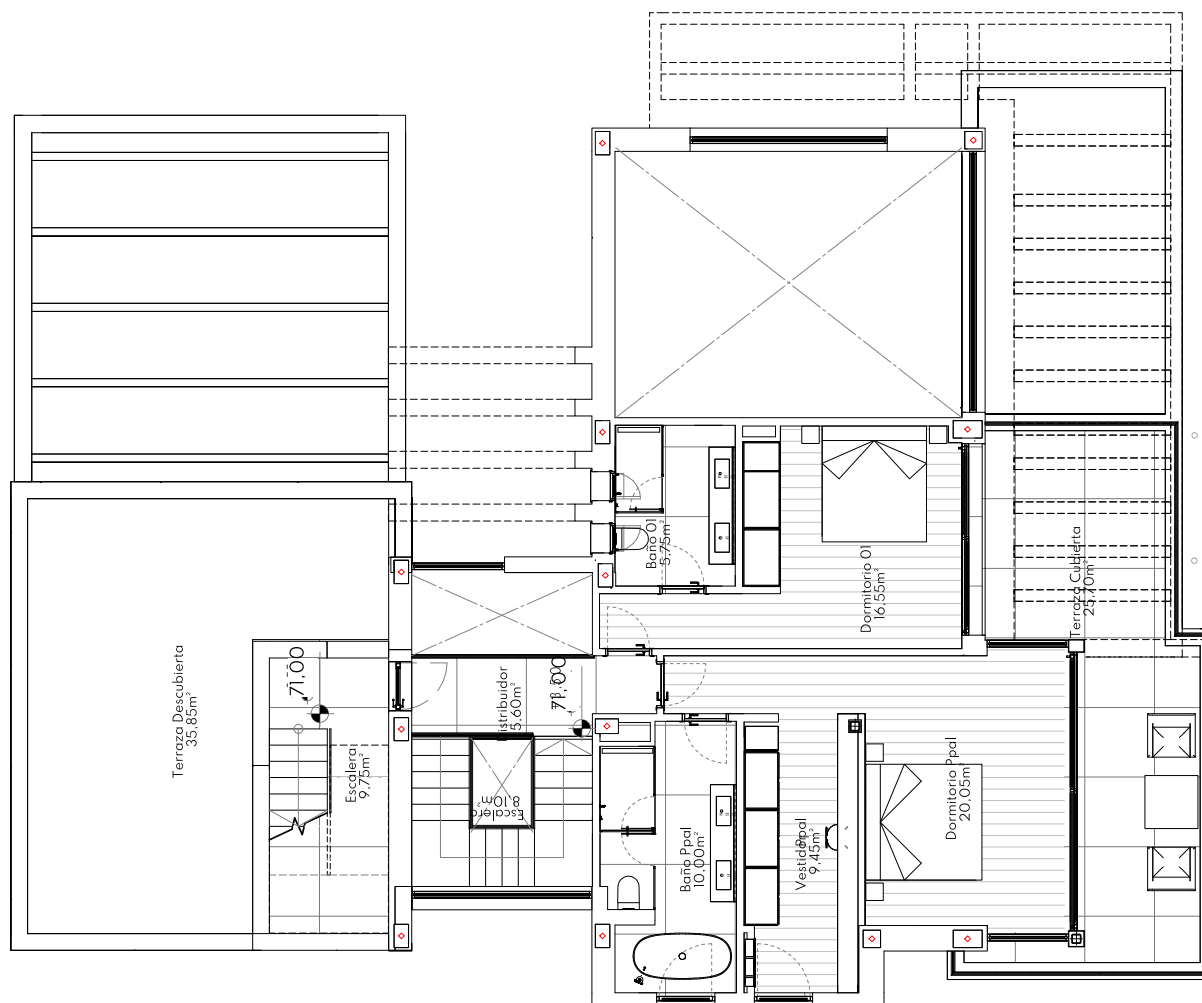
# MAIN LEVEL



This plan may be modified depending on progress of the development. The furniture shown is purely for decorative purposes. The project manager reserves the right to make the necessary changes for any possible functional, aesthetic and legal reasons, without this negatively affecting the quality of the construction. Illustrative dimensions.



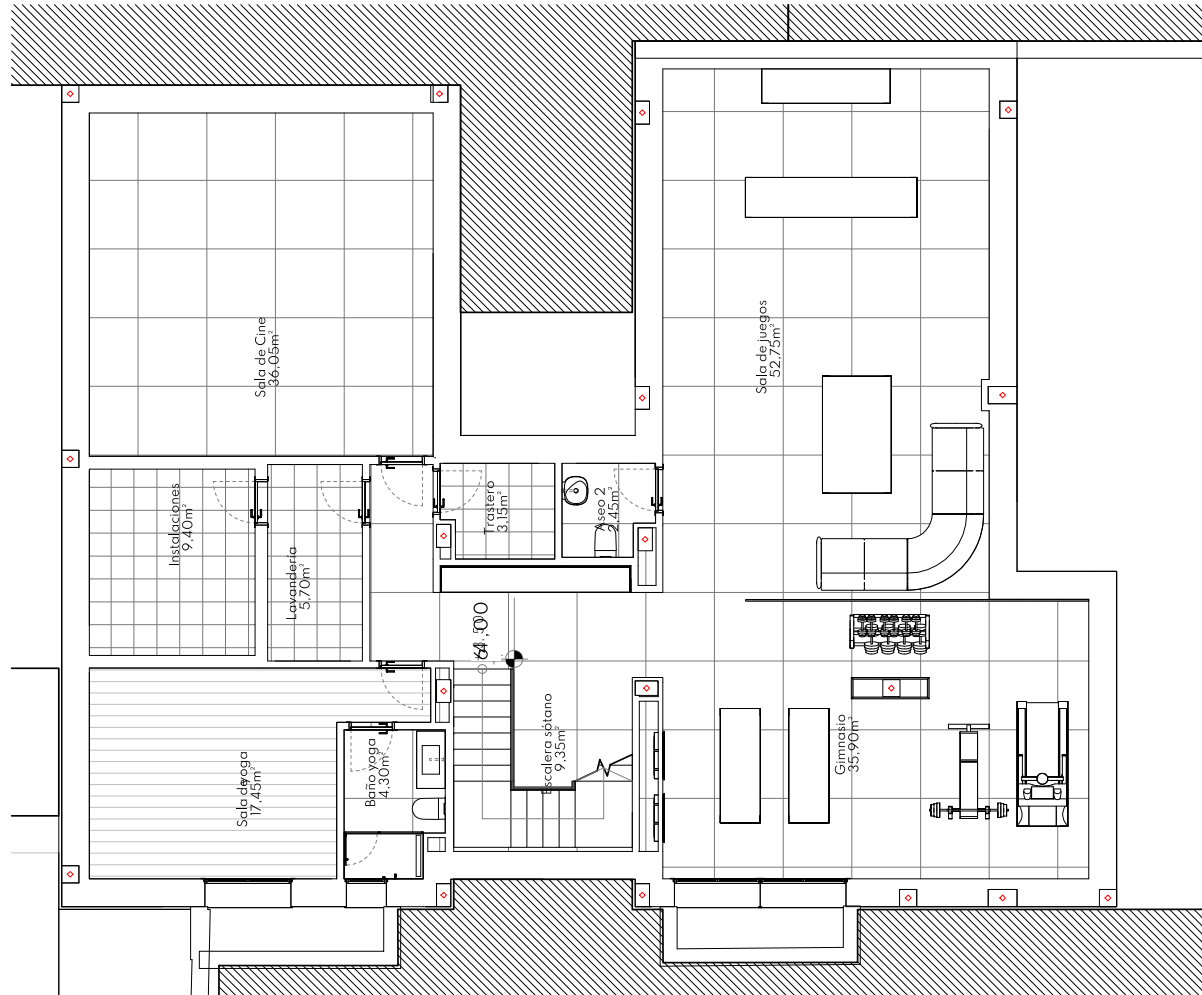
## UPPER LEVEL



This plan may be modified depending on progress of the development. The furniture shown is purely for decorative purposes. The project manager reserves the right to make the necessary changes for any possible functional, aesthetic and legal reasons, without this negatively affecting the quality of the construction. Illustrative dimensions.



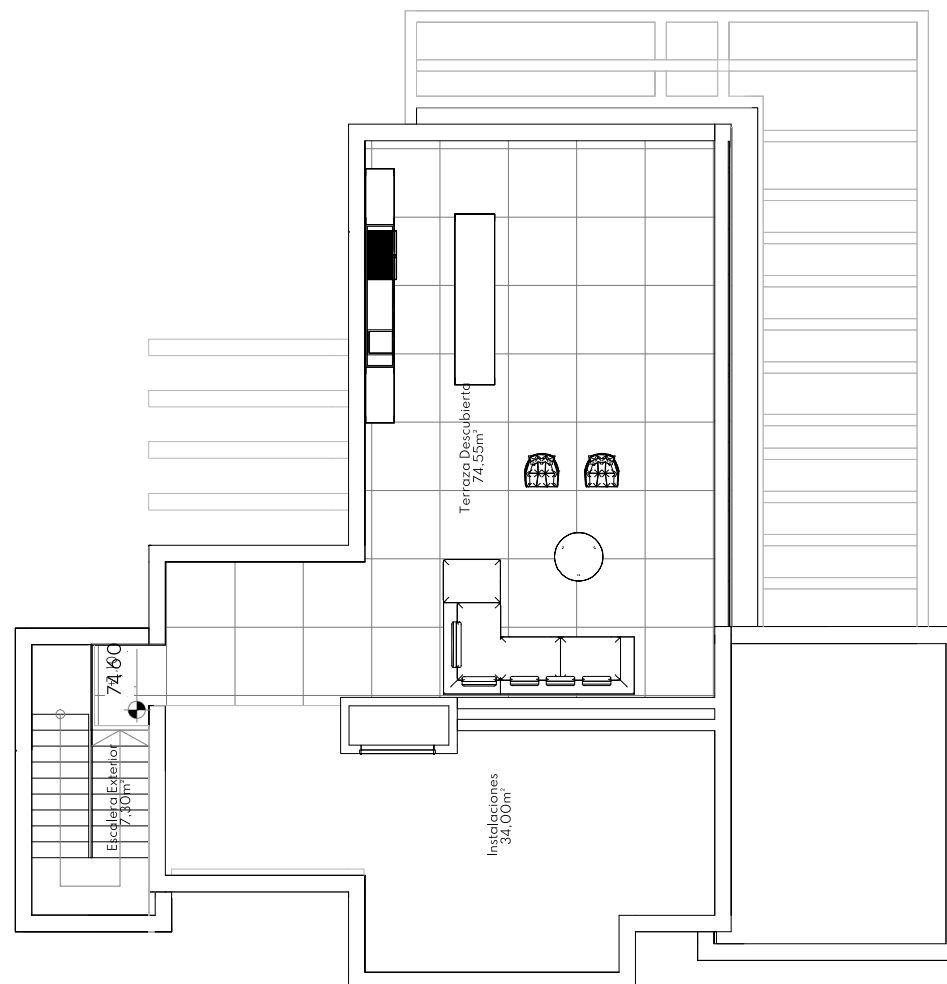
## LOWER LEVEL



This plan may be modified depending on progress of the development. The furniture shown is purely for decorative purposes. The project manager reserves the right to make the necessary changes for any possible functional, aesthetic and legal reasons, without this negatively affecting the quality of the construction. Illustrative dimensions.



# SOLARIUM



This plan may be modified depending on progress of the development. The furniture shown is purely for decorative purposes. The project manager reserves the right to make the necessary changes for any possible functional, aesthetic and legal reasons, without this negatively affecting the quality of the construction. Illustrative dimensions.